

TWENTY NINE

# INDIAN CREEK

MIAMI BEACH

## Residence 03

LEVELS 5 AND 7

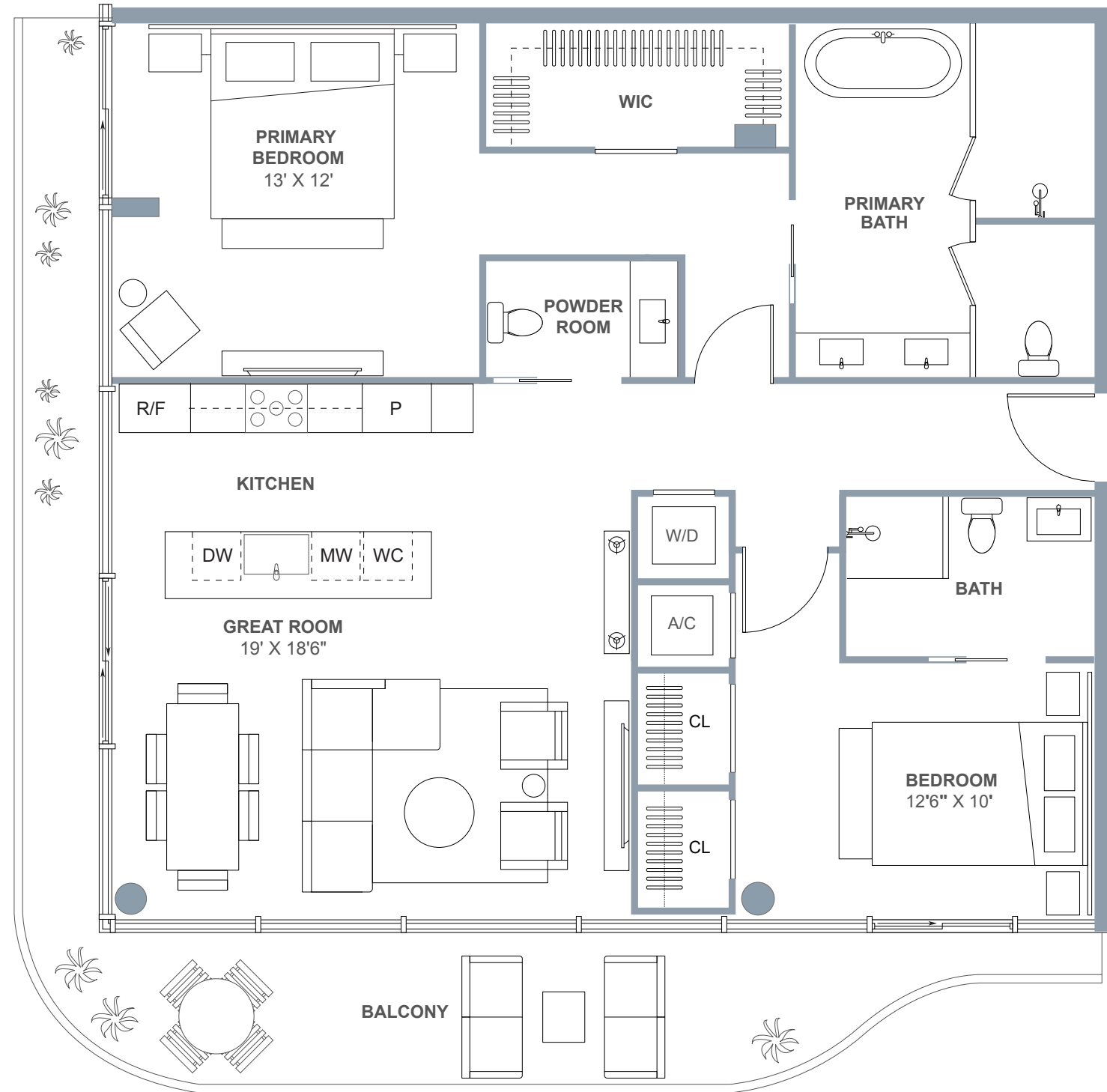
2 BEDROOMS

2.5 BATHROOMS

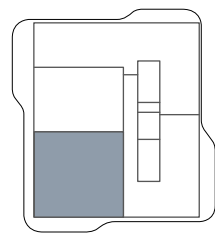
INTERIOR 1,146 SF | 106 SQ. M

EXTERIOR 296 SF | 27 SQ. M

TOTAL 1,442 SF | 133 SQ. M



INDIAN CREEK DRIVE



29TH STREET

2901 INDIAN CREEK DRIVE, MIAMI BEACH, FLORIDA, 33140

Stated dimensions are measured to the exterior boundaries of the exterior walls and the centerline of interior demising walls and in fact vary from the dimensions that would be determined by using the description and definition of the "unit" set forth in the declaration (which generally only includes the interior airspace between the perimeter walls and excludes interior structural components). For your reference, the area of the unit, determined in accordance with those defined unit boundaries, is set forth in exhibit 3 to the declaration of the condominium. Note that measurements of rooms set forth on this floor plan are generally taken at the greatest points of each given room (as if the room were a perfect rectangle), without regard for any cutouts. Accordingly, the area of the actual room will typically be smaller than the product obtained by multiplying the stated length times width. All dimensions are approximate and may vary with actual construction, and all floor plans and development plans are subject to change.