

SOLINA

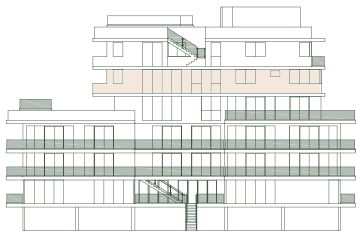
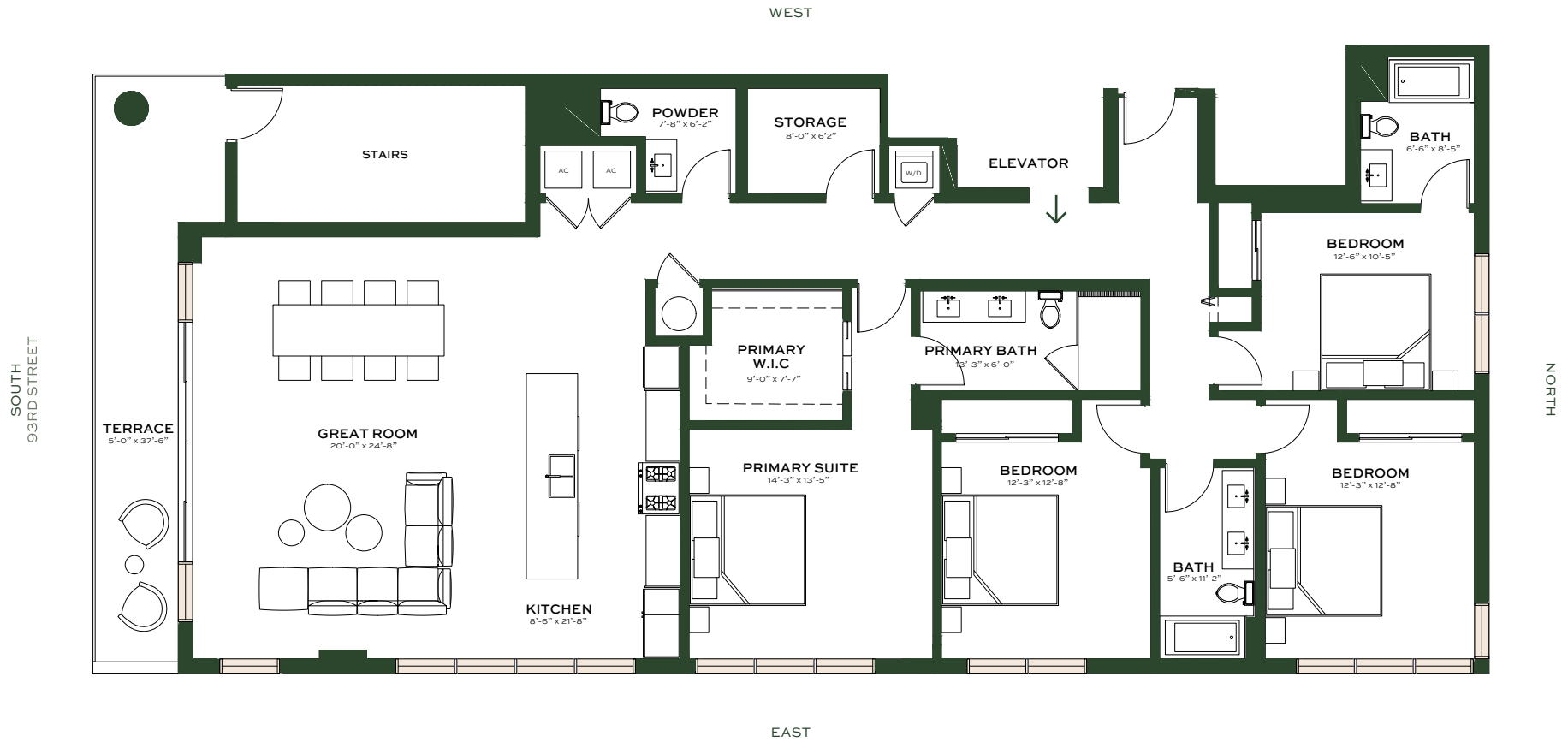
BAY HARBOR

1055 93RD STREET
BAY HARBOR ISLANDS, FL 33154

PENTHOUSE 6

4 BEDROOM
3.5 BATHROOM

INTERIOR	EXTERIOR
2,367 SF	199 SF
220 SQ M	18 SQ M



EAST FACADE

ORAL REPRESENTATIONS CANNOT BE RELIED UPON AS CORRECTLY STATING REPRESENTATIONS OF THE DEVELOPER. FOR CORRECT REPRESENTATIONS, MAKE REFERENCE TO THIS BROCHURE AND TO THE DOCUMENTS REQUIRED BY § 718.503, FLORIDA STATUTES, TO BE FURNISHED BY A DEVELOPER TO A BUYER OR LESSEE.

Neither DDG 1055 BHI LLC nor any of its affiliates or related persons makes any representation, warranty or guarantee, expressed or implied, in respect of any statement or information made or contained in these materials. Neither DDG 1055 BHI LLC nor any of its directors, officers, employees or agents has or will have any responsibility or liability arising out of, or related to, these materials or the transactions contemplated by these materials, including any liability or responsibility for any statement or information made or contained in or the use of these materials. The square footages of Units set forth in this brochure and/or these marketing materials, and/or the methodology used to calculate such square footages, may differ from the square footages of Units set forth in the other documents required by § 718.503, Florida Statutes, to be furnished by a Developer to a buyer or lessee, and/or the methodology used to calculate such square footages.