

LUCERNE

PANTHER™
NATIONAL



6,365
4,946

TOTAL SF
A/C LIVING AREA

1
STORY

4
BEDROOMS

4
BATHS

1
POWDER ROOM

1
CABANA BATH

1
DEN

3
CAR GARAGE

1
GOLF CART PARKING

[STRANG]



ORAL REPRESENTATIONS CANNOT BE RELIED UPON AS CORRECTLY STATING REPRESENTATIONS OF THE SELLER. FOR CORRECT REPRESENTATIONS, MAKE REFERENCE TO THIS BROCHURE AND TO THE DOCUMENTS REQUIRED BY SECTION 718.503, FLORIDA STATUTES AND THE INTERSTATE LAND SALES FULL DISCLOSURE ACT, WHERE APPLICABLE, TO BE FURNISHED BY A SELLER TO A BUYER OR LESSEE. ALL DIMENSIONS, FEATURES, EXTERIOR RENDERINGS, AND SPECIFICATIONS ARE APPROXIMATE AND SUBJECT TO CHANGE WITHOUT NOTICE. MAY 2024 - V1

LUCERNE

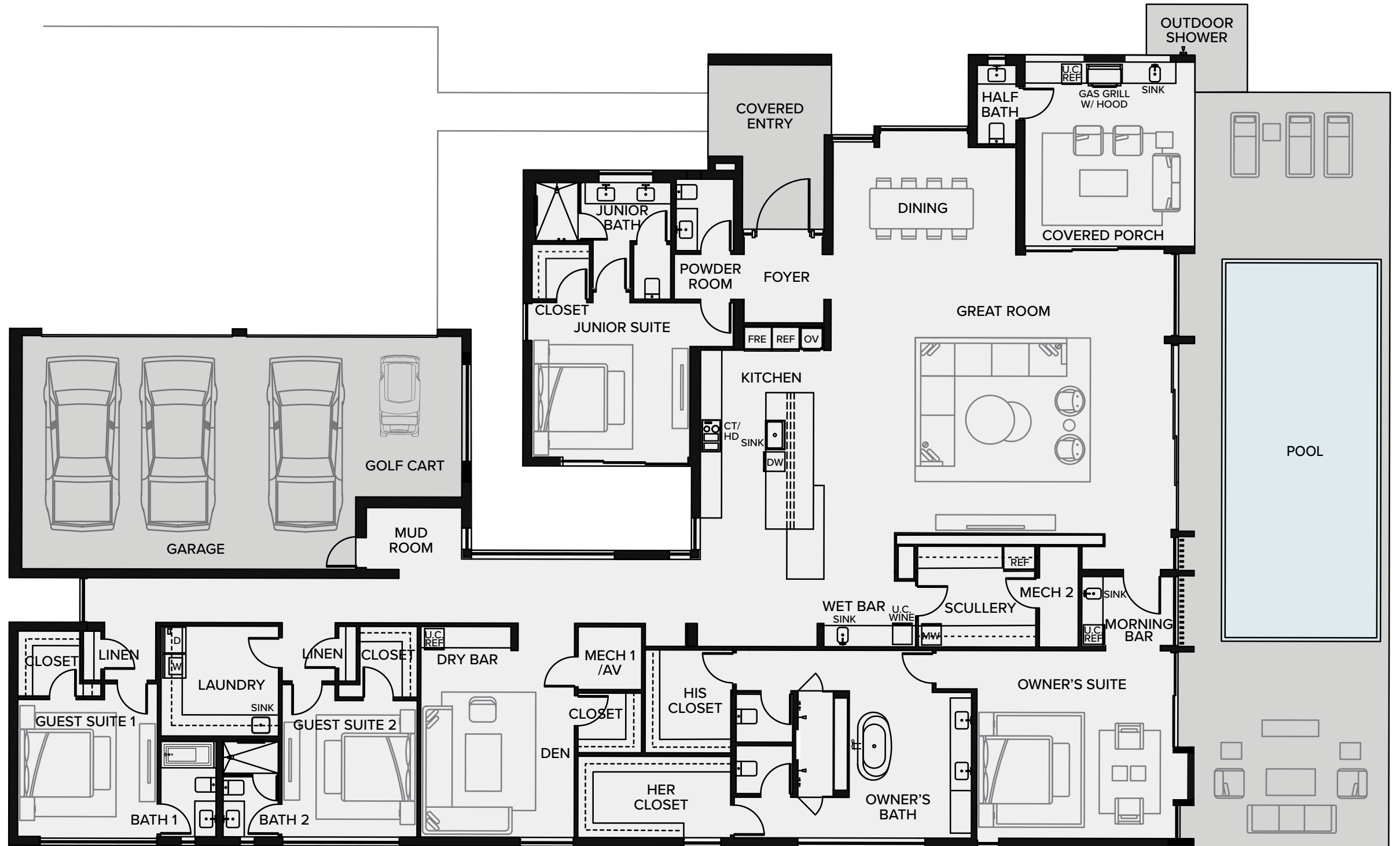


PANTHERNATIONAL.COM

LUCERNE

PANTHER™
NATIONAL

6,365 TOTAL SF
4,946 A/C LIVING AREA



OWNER'S SUITE:	18'-1" x 17'-2"
OWNER'S BATH:	17'-2" x 16'-4"
OWNER'S HER CLOSET:	7'-8" x 14'-5"
OWNER'S HIS CLOSET:	9'-2" x 8'-1"
JUNIOR SUITE:	15'-1" x 14'-1"
GUEST SUITE 1:	13'-2" x 12'-5"
GUEST SUITE 2:	12'-9" x 12'-4"
DEN:	14'-6" x 19'-4"
GREAT ROOM:	27'-9" x 24'-8"
KITCHEN:	24'-6" x 16'-0"
DINING:	17'-3" x 9'-10"
SCULLERY:	11'-0" x 9'-6"
WET BAR:	13'-2" x 4'-8"
LAUNDRY:	9'-10" x 11'-1"
MUD ROOM:	5'-10" x 9'-0"
GARAGE:	31'-6" x 22'-8"
GOLF CART GARAGE:	10'-0" x 12'-5"
COVERED PORCH:	16'-0" x 17'-4"
CABANA BATH:	3'-8" x 7'-6"

STRANG



ORAL REPRESENTATIONS CANNOT BE RELIED UPON AS CORRECTLY STATING REPRESENTATIONS OF THE SELLER. FOR CORRECT REPRESENTATIONS, MAKE REFERENCE TO THIS BROCHURE AND TO THE DOCUMENTS REQUIRED BY SECTION 718.503, FLORIDA STATUTES AND THE INTERSTATE LAND SALES FULL DISCLOSURE ACT, WHERE APPLICABLE, TO BE FURNISHED BY A SELLER TO A BUYER OR LESSEE. ALL DIMENSIONS, FEATURES, EXTERIOR RENDERINGS, AND SPECIFICATIONS ARE APPROXIMATE AND SUBJECT TO CHANGE WITHOUT NOTICE. MAY 2024 - V1

LUCERNE

PANTHERNATIONAL.COM

LUCERNE

REAR VIEW

PANTHER™
NATIONAL



@2024 PANTHER NATIONAL. THE SHOWN
RENDERING MAY INCLUDE BOTH STANDARD
INCLUSIONS AND OPTIONAL UPGRADES.

ARTIST'S CONCEPTUAL RENDERING

LUCERNE



PANTHERNATIONAL.COM

[STRANG]



ORAL REPRESENTATIONS CANNOT BE RELIED UPON AS CORRECTLY STATING REPRESENTATIONS OF THE SELLER. FOR CORRECT REPRESENTATIONS, MAKE REFERENCE TO THIS BROCHURE AND TO THE DOCUMENTS REQUIRED BY SECTION 718.503, FLORIDA STATUTES AND THE INTERSTATE LAND SALES FULL DISCLOSURE ACT, WHERE APPLICABLE, TO BE FURNISHED BY A SELLER TO A BUYER OR LESSEE. ALL DIMENSIONS, FEATURES, EXTERIOR RENDERINGS, AND SPECIFICATIONS ARE APPROXIMATE AND SUBJECT TO CHANGE WITHOUT NOTICE. MAY 2024 - VI