



# CASAMAR

POMPANO BEACH



FLOORPLAN

## Model 302

POMPANO BEACH LIKE YOU'VE NEVER SEEN

900 N OCEAN BLVD, POMPANO BEACH, FL 33062 | INQUIRIES 954.433.6080 | CASAMARBEACH.COM

# Model 302

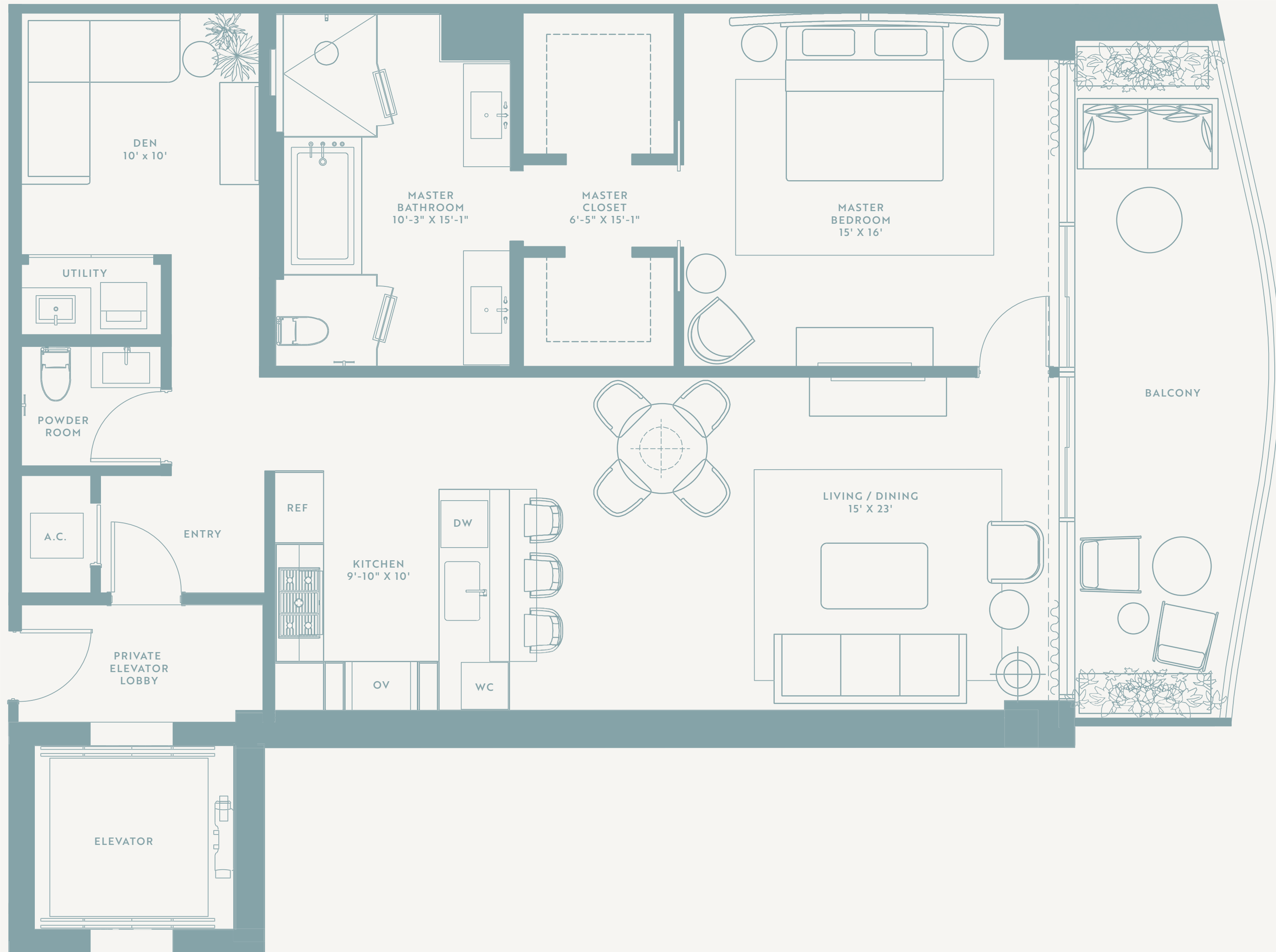


## CASAMAR

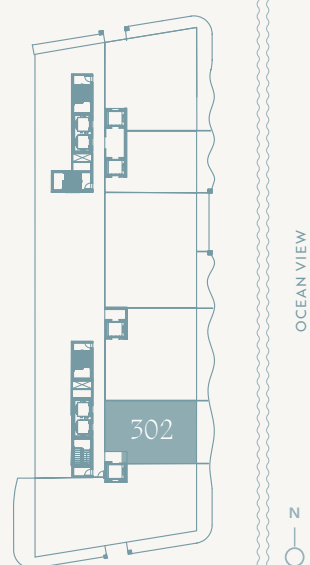
POMPANO BEACH

1 Bedroom + Den

INTERIOR 1,350 SF | EXTERIOR 256 SF | TOTAL 1,606 SF



Key  
Plate



ORAL REPRESENTATIONS CANNOT BE RELIED UPON AS CORRECTLY STATING REPRESENTATIONS OF THE DEVELOPER. FOR CORRECT REPRESENTATIONS, MAKE REFERENCE TO THE DOCUMENTS REQUIRED BY SECTION 718.503, FLORIDA STATUTES, TO BE FURNISHED BY A DEVELOPER TO A BUYER OR LESSEE. CASAMAR IS DEVELOPED BY PRH 900 NORTH OCEAN, LLC ("DEVELOPER") AND ANY CASAMAR OFFERING IS MADE ONLY BY THE DEVELOPER'S PROSPECTUS FOR THE CONDOMINIUM. THE DEVELOPER IS NOT INCORPORATED IN, LOCATED IN, NOR A RESIDENT OF, NEW YORK. THIS IS NOT INTENDED TO BE AN OFFER TO SELL, OR SOLICITATION OF AN OFFER TO BUY, CONDOMINIUM UNITS IN NEW YORK OR TO RESIDENTS OF NEW YORK, OR IN ANY OTHER JURISDICTION WHERE PROHIBITED BY LAW UNLESS THE CONDOMINIUM IS REGISTERED IN SUCH JURISDICTIONS OR EXEMPT. NO STATEMENT SHOULD BE RELIED UPON IF NOT MADE IN THE DEVELOPER'S PROSPECTUS. ARCHITECTURAL DESIGN ELEMENTS MAY VARY FROM CONCEPT TO ACTUAL CONSTRUCTION. ALL DEPICTIONS ARE CONCEPTUAL. DEVELOPER, PURSUANT TO A LICENSE AGREEMENT HAS A RIGHT TO USE THE TRADE NAMES, MARKS, AND LOGOS OF THE RELATED GROUP. CONSULT THE DEVELOPER'S PROSPECTUS FOR ALL TERMS, CONDITIONS, SPECIFICATIONS, AND UNIT DIMENSIONS. REPRODUCTION FOR PRIVATE OR COMMERCIAL USE IS NOT AUTHORIZED. 2022 © PRH 900 NORTH OCEAN, LLC. UNLESS OTHERWISE NOTED, WITH ALL RIGHTS RESERVED.