



FLOOR PLANS

PIER SIXTY-SIX

RESIDENCES

PIER SIXTY-SIX
RESIDENCES

INDIGO CONDOMINIUM
RESIDENCES

A

3 BEDROOMS
3 BATHROOMS
1 POWDER ROOM

Interior

2,896 SQFT
269.05 SM

Terrace

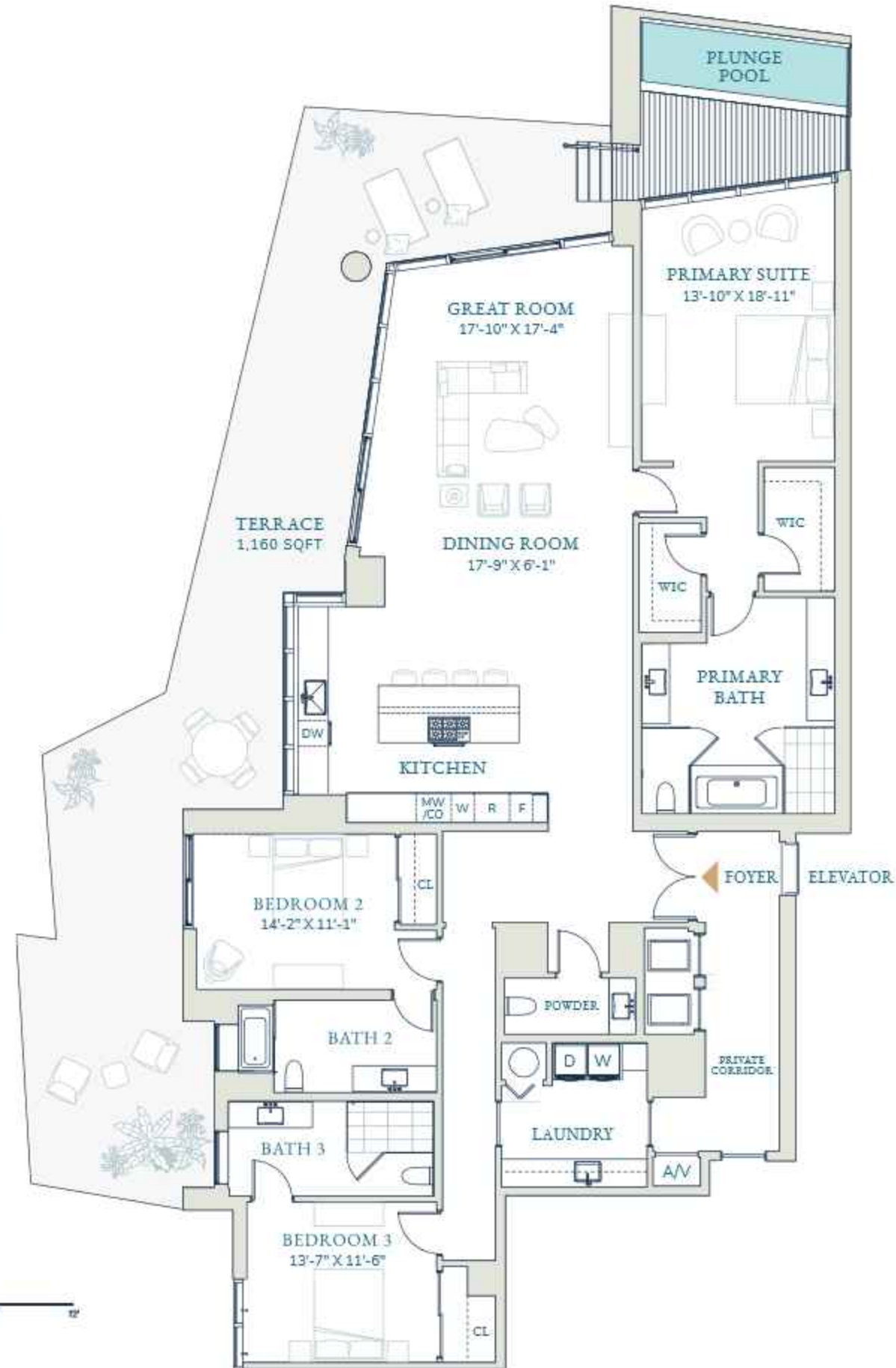
1,160 SQFT
107.77 SM

Total

4,056 SQFT
376.81 SM



WATER VIEW



Stated dimensions are measured to the exterior boundaries of the exterior walls and the centerline of interior demising walls (without deductions for interior columns, shear walls or shafts) and in fact vary from the dimensions that would be determined by using the description and definition of the "Unit" set forth in the Declaration (which generally only includes the interior airspace between the perimeter walls and excludes interior structural components, shear walls and shafts). For the calculation of the unit area following the definition of the unit set forth in the Declaration, see Exhibit "3" of the Declaration. Additionally, measurements of rooms set forth on any floor plan are generally taken at the greatest points of each given room (as if the room were a perfect rectangle), without regard for any cutouts. Accordingly, the area of the actual room will typically be smaller than the product obtained by multiplying the stated length times width. All dimensions are approximate, and all floor plans and development plans are subject to change.

PIER SIXTY-SIX
RESIDENCES

INDIGO CONDOMINIUM
RESIDENCES

B

3 BEDROOMS
3 BATHROOMS
1 POWDER ROOM

Interior

2,896 SQFT
269.05 SM

Terrace

1,160 SQFT
107.77 SM

Total

4,056 SQFT
376.81 SM



Stated dimensions are measured to the exterior boundaries of the exterior walls and the centerline of interior demising walls (without deductions for interior columns, shear walls or shafts) and in fact vary from the dimensions that would be determined by using the description and definition of the "Unit" set forth in the Declaration (which generally only includes the interior airspace between the perimeter walls and excludes interior structural components, shear walls and shafts). For the calculation of the unit area following the definition of the unit set forth in the Declaration, see Exhibit "3" of the Declaration. Additionally, measurements of rooms set forth on any floor plan are generally taken at the greatest points of each given room (as if the room were a perfect rectangle), without regard for any cutouts. Accordingly, the area of the actual room will typically be smaller than the product obtained by multiplying the stated length times width. All dimensions are approximate, and all floor plans and development plans are subject to change.

PIER SIXTY-SIX
RESIDENCES

INDIGO CONDOMINIUM
RESIDENCES

C

3 BEDROOMS
3 BATHROOMS
1 POWDER ROOM

Interior

2,837 SQFT
263.57 SM

Terrace

1,045 SQFT
97.08 SM

Total

3,882 SQFT
360.65 SM



Stated dimensions are measured to the exterior boundaries of the exterior walls and the centerline of interior demising walls (without deductions for interior columns, shear walls or shafts) and in fact vary from the dimensions that would be determined by using the description and definition of the "Unit" set forth in the Declaration (which generally only includes the interior airspace between the perimeter walls and excludes interior structural components, shear walls and shafts). For the calculation of the unit area following the definition of the unit set forth in the Declaration, see Exhibit "3" of the Declaration. Additionally, measurements of rooms set forth on any floor plan are generally taken at the greatest points of each given room (as if the room were a perfect rectangle), without regard for any cutouts. Accordingly, the area of the actual room will typically be smaller than the product obtained by multiplying the stated length times width. All dimensions are approximate, and all floor plans and development plans are subject to change.

PIER SIXTY-SIX
RESIDENCES

INDIGO CONDOMINIUM
RESIDENCES

D

- 3 BEDROOMS
- 3 BATHROOMS
- 1 POWDER ROOM

Interior

2,837 SQFT
263.57 SM

Terrace

1,045 SQFT
97.08 SM

Total

3,882 SQFT
360.65 SM

N



WATER VIEW



0' 3' 6' 12'



Stated dimensions are measured to the exterior boundaries of the exterior walls and the centerline of interior demising walls (without deductions for interior columns, shear walls or shafts) and in fact vary from the dimensions that would be determined by using the description and definition of the "Unit" set forth in the Declaration (which generally only includes the interior airspace between the perimeter walls and excludes interior structural components, shear walls and shafts). For the calculation of the unit area following the definition of the unit set forth in the Declaration, see Exhibit "3" of the Declaration. Additionally, measurements of rooms set forth on any floor plan are generally taken at the greatest points of each given room (as if the room were a perfect rectangle), without regard for any cutouts. Accordingly, the area of the actual room will typically be smaller than the product obtained by multiplying the stated length times width. All dimensions are approximate, and all floor plans and development plans are subject to change.

PIER SIXTY-SIX
RESIDENCES

INDIGO CONDOMINIUM
RESIDENCES

Penthouse

- 5 BEDROOMS
- 5 BATHROOMS
- 1 POWDER ROOM

Interior

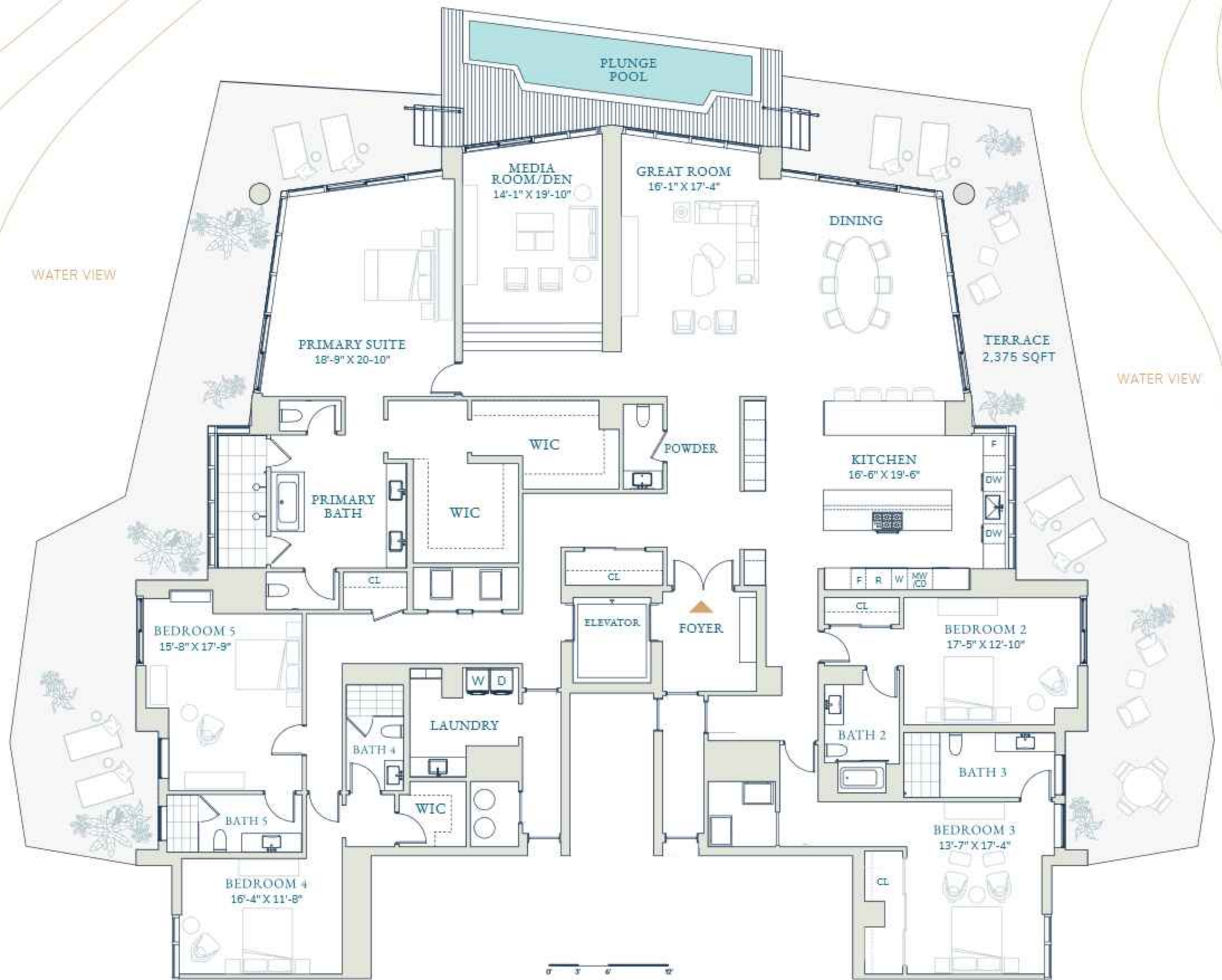
5,824 SQFT
541.07 SM

Terrace

2,375 SQFT
220.64 SM

Total

8,199 SQFT
761.71 SM



Stated dimensions are measured to the exterior boundaries of the exterior walls and the centerline of interior demising walls (without deductions for interior columns, shear walls or shafts) and in fact vary from the dimensions that would be determined by using the description and definition of the "Unit" set forth in the Declaration (which generally only includes the interior airspace between the perimeter walls and excludes interior structural components, shear walls and shafts). For the calculation of the unit area following the definition of the unit set forth in the Declaration, see Exhibit "3" of the Declaration. Additionally, measurements of rooms set forth on any floor plan are generally taken at the greatest points of each given room (as if the room were a perfect rectangle), without regard for any cutouts. Accordingly, the area of the actual room will typically be smaller than the product obtained by multiplying the stated length times width. All dimensions are approximate, and all floor plans and development plans are subject to change.